



555G

LOADER



**SAE Net
Horsepower**

90 hp
(67 kW)

**Drive
System**

Power Shift
Direct Drive

**Operating
Weight SAE**

20,100 lb.
(9117 kg)

Model shown may include options

ENGINE

John Deere engineered and manufactured 4-cylinder diesel engine. Replaceable wet-type cylinder liners help ensure superior heat dissipation, longer engine life. High-strength alloy heads include replaceable valve seat inserts. Plasma coated piston rings are also included. High engine torque rise helps provide fast engine recovery when working in tough operating conditions.

Engine: John Deere 4045T

Rated power at 2100 rpm	90 SAE net hp (67 kW)
	95 SAE gross hp (71 kW)
Cylinders	4
Displacement	276 cu. in. (4,524 L)
Fuel consumption, typical	1.8 to 2.8 gal/hr (6.8 to 10.6 L/h)
Maximum net torque at 1300 rpm	293 lb-ft (397 Nm)
Lubrication	pressure system with full-flow filter
Air cleaner	dry type with restriction indicator
Electrical system	12 volt with 65 amp alternator
Cooling fan	blower

TRANSMISSION

Full power shift, Dura-Shift direct drive transmission is designed and built by John Deere. Four speeds forward and reverse allow the operator to match speeds to the working conditions. You can power shift easily from one gear to another as conditions change, without stopping the machine or using a clutch. Power control inching pedal adds versatility.

TRAVEL SPEEDS

Gear	Forward		Reverse	
	mph	(km/h)	mph	(km/h)
1	1.2	1.9	1.4	2.3
2	2.1	3.4	2.3	3.7
3	3.3	5.3	3.6	5.8
4	5.4	8.7	6.0	9.7

FINAL DRIVES

Large heavy-duty final drive assemblies help ensure long service life. To keep final drives from being adversely affected by shock loads, they are attached directly to the transverse case, and are isolated from the track frame.

STEERING/BRAKES

Oil-cooled and modulated steering system provides excellent durability and steering control. Multiple wet-disk steering clutches and wet-band steering brakes are pressure lubricated and provide long-term service life. They are located at the rear of the machine and can be serviced easily.

HYDRAULICS

Control	Single lever
Pressure	2600 psi (17,927 kPa)
Pump	gear
Flow	38 gpm (144 L/min)
Cylinders	ground, heat-treated, chrome-plated, polished cylinder rods with hardened steel (replaceable bushings) pivot pins
	Bore Stroke
Boom, two	4.53 in. (115 mm) x 31.93 in. (811 mm)
Bucket, two	3.94 in. (100 mm) x 29.3 in. (744 mm)
Boom cylinder rod diameter	2.48 in. (63 mm)
Bucket cylinder rod diameter	1.96 in. (50 mm)

TRACKS

John Deere DURA-TRAX™ undercarriage features large deep-heat-treated components for exceptional wear. Pins and bushings are sealed for life. Sealed and lubricated chain is available. Rollers and idlers are permanently lubricated. All 555G Loaders have track frame covers that substantially reduce dirt buildup and make cleanout easier.

Undercarriage

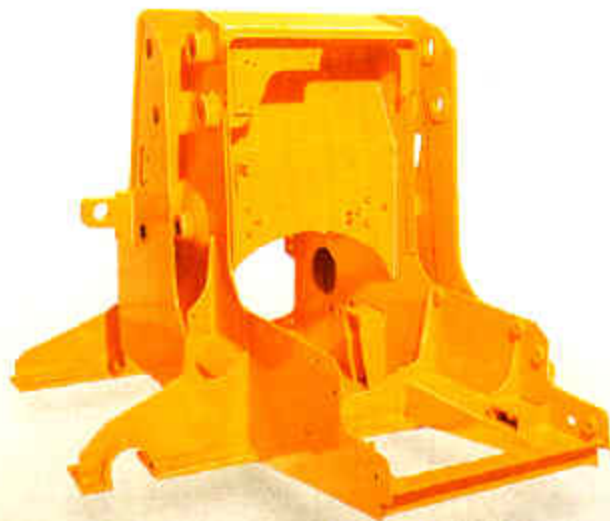
Standard Track	
Two-bar grouser, closed-center	16 in. (410 mm)
Track shoes, each side	36
Ground contact area	2522 sq. in. (16,270 cm ²)
Ground pressure	8.0 psi (55 kPa)
Length of track on ground	78.8 in. (2002 mm)
Track gauge	61 in. (1550 mm)
Carrier rollers	2
No. of track rollers	6
Adjustment	hydraulic
Ground clearance	14.25 in. (362 mm)
Wide Track	
Two-bar grouser, closed-center	24 in. (610 mm)
Track shoes, each side	36
Ground contact area	3782 sq. in. (20,440 cm ²)
Ground pressure	5.6 psi (38.6 kPa)
Length of track on ground	78.8 in. (2002 mm)
Track gauge	69 in. (1753 mm)
Carrier rollers	2
No. of track rollers	6
Adjustment	hydraulic
Ground clearance	14.75 in. (375 mm)

CAPACITIES

Fuel tank	41 gal. (155.2 L)
Cooling system	18 qt. (17.0 L)
Crankcase, including filter	13 qt. (12.3 L)
Transmission	22.5 gal. (85.2 L)
Final drive (each)	7 qt. (6.6 L)
Hydraulic reservoir	10 gal. (37.8 L)
Hydraulic system	19.7 gal. (74.5 L)

OPERATING WEIGHT

555G (with ROPS)	SAE
Standard track	20,100 lb. (9117 kg)
Wide track	21,000 lb. (9525 kg)



MAINFRAME

All major components are attached to the rugged one-piece mainframe. True modularization has been achieved in the 555G to help ensure easy component servicing. Components such as the engine, transmission, final drives, steering system and track frames, for example, can be removed without disturbing other major components. The separate mainframe also provides for unequalled long-term structural integrity.



REPLACEABLE LINERS

Heavy-duty John Deere built engines have hardened, replaceable wet cylinder liners to help provide longer engine life. Major engine rebuilds become easier and less expensive. Liners feature uniform wall thickness. This, combined with oil spray cooling of the pistons, provides for excellent heat dissipation and elimination of cylinder "hot spots." All are features normally associated only with larger diesel engines.



STEERING CLUTCHES/BRAKES

Fully modulated steering valve allows for smooth, precise reengagement of steering clutches. Flow-through oil-cooled steering assemblies have pressurized, circulating oil internally to provide lubrication and cooling for extended life and smoother steering and brake action.



LOADER, LINKAGE

Four-bar in-line linkage design provides excellent loader breakout force, and automatic self-leveling regardless of bucket height. Ground level roll-back of 40 degrees helps ensure heaped bucket loads and retains the material better during transport. Automatic return-to-dig is standard, and the operator always has good visibility, regardless of bucket position.

555C LOADER OPERATING INFORMATION

Bucket Type		General Purpose		Multipurpose**
		Standard	Wide Track*	
Capacity, heaped, SAE	cu. yd. m ³	1.5 1.15	1.5 1.15	1.5 1.15
Capacity, struck, SAE	cu. yd. m ³	1.25 0.96	1.25 0.96	1.2 0.92
Bucket width	in. m	84.9 2.15	97.4 2.47	84.9 2.15
Bucket weight, including teeth	lb. kg	1250 567	1530 694	2320 1052
Breakout force, SAE	lb. kN	20,250 90	21,900 97	18,300 81.4
Tipping load, SAE, (with drawbar, two counterweights, two sprocket weights and ROPS)	lb. kg	13,600 6168	14,400 6530	12,905 5855
Raising time	sec.	6.5	6.5	6.6
Dumping time	sec.	1.6	1.6	1.6
Lowering time	sec.	3.8	3.8	3.4
SAE operating weight with ROPS canopy	lb. kg	20,100 9117	21,000 9525	21,807 9890
SAE operating weight with ROPS cab	lb. kg	20,734 9403	21,630 9810	22,441 10177

*With four counterweights – “0” sprocket weight

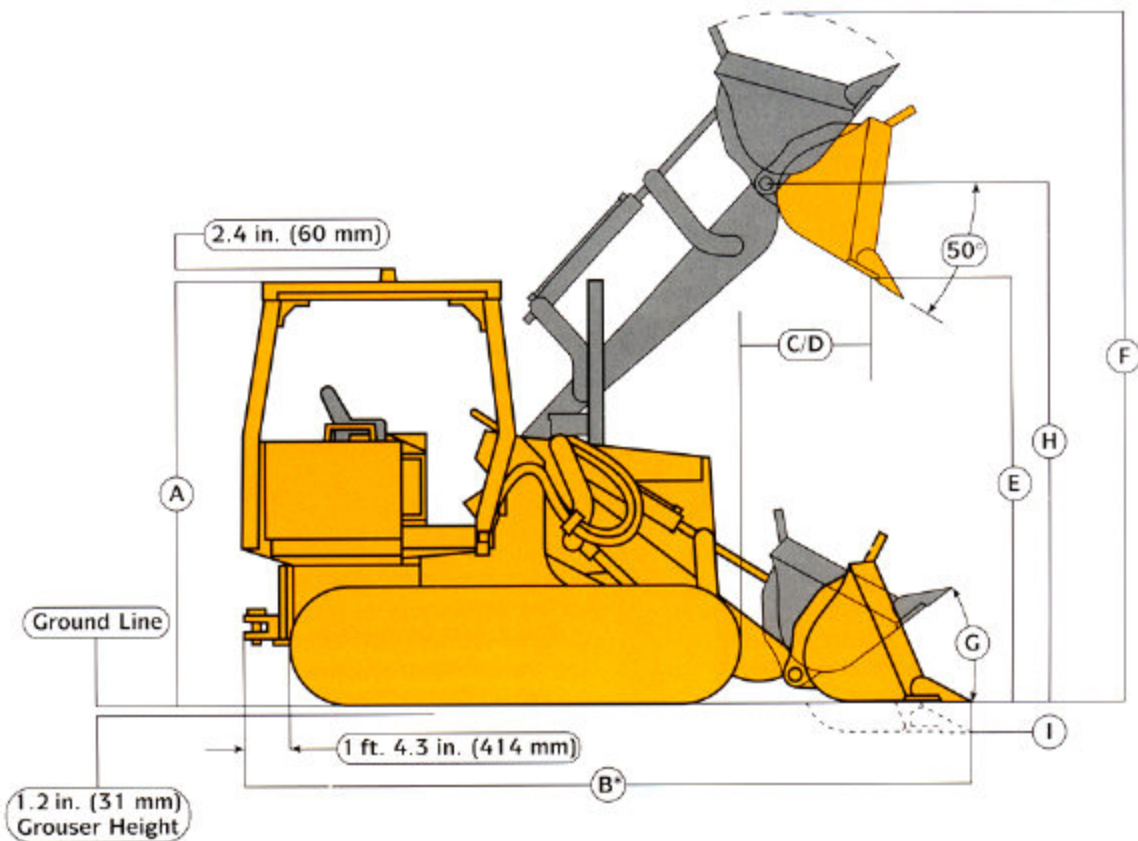
**With four counterweights and two sprocket weights

Adjustments to operating weights and tipping load for 1.5 cu. yd. (1.15 m³) standard bucket

ADJUSTMENTS TO OPERATING WEIGHTS

Add (+) or deduct (–) lb. (kg) as indicated for loaders with:		Operating Weight		Tipping Load	
Cab	lb.	+ 632		+ 450	
	kg	+ 286		+ 204	
Bucket teeth, bolt-on	lb.	– 143.8		+ 192	
	kg	– 65.2		+ 87	
Parallel ripper with three shanks (w/o drawbar and four counterweights)	lb.	+ 800		+ 1100	
	kg	+ 363		+ 500	
Counterweight (each)	lb.	+ 300		+ 500	
	kg	+ 136		+ 226	

DIMENSIONS



Key: Bucket Type	General Purpose		Multipurpose
	Standard	Wide-Track*	
Capacity	1.5 cu. yd. (1.15 m ³)	1.5 cu. yd. (1.15 m ³)	1.5 cu. yd. (1.15 m ³)
A Overall height	9 ft. 0.4 in. (2.75 m)	9 ft. 0.4 in. (2.75 m)	9 ft. 0.4 in. (2.75 m)
B Overall length	15 ft. 2.2 in. (4.63 m)	14 ft. 11.5 in. (4.56 m)	15 ft. 4.9 in. (4.69 m)
C Reach at maximum height (45° discharge)	34.2 in. (868 mm)	30.7 in. (780 mm)	34.0 in. (863 mm)
D Reach at 7 ft. (2.13 m) clearance (45° discharge)	51.1 in. (1298 mm)	48.1 in. (1221 mm)	48.2 in. (1224 mm)
E Dump clearance, maximum height (45° discharge)	105.1 in. (2670 mm)	106.3 in. (2700 mm)	106.1 in. (2695 mm)
F Maximum operating height	174.1 in. (4424 mm)	170.6 in. (4334 mm)	174.4 in. (4430 mm)
G Rollback angle			
Concrete level	40 degrees	38 degrees	40 degrees
Carry position	47 degrees	46 degrees	44 degrees
H Height to hinge pin	131.5 in. (3340 mm)	131.5 in. (3340 mm)	131.5 in. (3340 mm)
I Digging depth	5.3 in. (135 mm)	5.3 in. (135 mm)	5.3 in. (135 mm)

*With two counterweights

ADDITIONAL STANDARD EQUIPMENT

Engine:	Power Train:
Altitude compensating turbocharger	Four-speed power shift transmission
Dual stage dry air cleaner with restriction indicator	Winch drive
Precleaner	Power control inching pedal
Fan guard	Automatic engaged park brake
Coolant recovery bottle	Electrical System:
Blower fan; trash resistant radiator	65-amp alternator, sealed
	Reverse warning alarm
	Hydraulics:
	Three-spool hydraulic valve
	Return to dig

Operator's Station:
ROPS canopy, isolation mounted, seat belt
Adjustable suspension seat
Adjustable armrests
Horn
Electronic monitor
Hourmeter
Decelerator
Decelerator with declutch
Interior mounted rearview mirror
Pedal steering

Overall Vehicle:
Bottom guards
Single lever bucket control
Boom safety lock
Bucket level indicator
Counterweights, three rear 900 lb. (408 kg)
Chain guide, front and rear
Track frame covers
Perforated engine side shields
Vandal protection

OPTIONAL OR SPECIAL EQUIPMENT

Add (or subtract) these weights to SAE Standard Equipment operating weights to obtain total operating weights.

	lb.	kg
Auxiliary starting receptacle	7	1
Backhoe with 24-in. (610 mm) standard bucket	3350	1522
Buckets		
Multipurpose	1070	486
Wide Track	280	127
Cab, ROPS with seat belt	680	309
Counterweights, rear (each)	300	145
Ether starting aid	1	.5
Drawbar	65	30
Full length rock guards	110	50
Headliner for ROPS canopy	3	1
Lever steering	59	26
Lights, halogen	5	2
Low profile ROPS*	240	109
Master electrical disconnect switch	2	1

	lb.	kg
Operator protection screens, rear side	85	38
	270	122
Radiator sand screen	2	1
Retrieval hitch	45	20
Reversible fan	11	5
Ripper, rear	742	336
Ripper, parallelogram	1380	626
Sealed and lubricated chain	-59	-27
Third function valve for auxiliary equipment	12	5
3-in. (76 mm) seat belt	2	1
Two batteries	63	28
Winch, John Deere 4000	1190	540

*Overall height reduced 4.71 in. (120 mm)

Note: When adding optional front and rear equipment, add appropriate counterweight.

THE JDAvantEDGE

JDAvantEdge is a wealth of support programs, parts systems and dealer resources, all designed to give you the edge. This package of special benefits is a major reason why John Deere offers the "best value" for your equipment dollar.

Best parts support—Twelve regional parts depots in North America and others around the world put parts support near your job no matter where in the world it is.

A computerized FLASH™ parts locating system linking these depots to dealerships can find out-of-stock parts in a hurry and get them into your hands fast. Usually within 24 hours.

Best service backup—Dealer service technicians are regularly schooled, at our modern facility in Davenport, Iowa, or by professionals in the field, to diagnose quickly and repair efficiently.

If they are stumped, a phone call to DTAC (Dealer Technical Assistance Center) puts them in touch with a staff of pros at the factory who help them find a solution quickly.

Best dealers—Your John Deere dealer is an important contributor to the JDAvantEdge. He or she is committed to being the best equipment supplier you can work with.

This is a dollars-and-cents commitment in parts inventory, in service facilities, in field service trucks. It's a sweat and blood commitment in dedicated, skilled and highly trained and motivated personnel in each and every department at the dealership.

But what sets John Deere dealers apart from all the rest is something more, a factor somewhat difficult to measure ... a caring attitude, and a sincere desire to be the best at meeting the needs of each individual customer.

John Deere Finance Plans—Whether you rent, lease or buy John Deere equipment, your dealer can explain the John Deere options available. One-stop options that let you free up operating capital, keep other lines of credit open. More solid benefits of the JDAvantEdge.

Best protection—In addition to the new equipment warranty that meets or exceeds the competition, SECURE® extended coverage, an optional service product for John Deere equipment, is available for repair coverage after the warranty concludes. Full machine or power train coverage is available for a variety of time periods to meet your needs. Consult your dealer for availability and details.

Net engine power is with standard equipment including air cleaner, exhaust system, alternator, and cooling fan, at standard conditions per SAE J1549 and DIN 6270B, using No. 2-D fuel at 35 API gravity. No derating is required up to 10,000 feet (3050 m) altitude. Gross power is without cooling fan.

Specifications and design subject to change without notice. Wherever applicable, specifications are in accordance with SAE standards. Except where otherwise noted, these specifications are based on a unit with rollover protective structure, full fuel tank, and 175-lb. (79 kg) operator and standard equipment.

