

D6R XL, D6R IG

Track-Type Tractor

Power, Angle, and
Tilt Blade Arrangement



Supplement

NOTE: For standard specifications and features, refer to the standard Caterpillar® specalogs for these machines. Featured machines may include additional equipment applicable only for special applications. See your Caterpillar Dealer for available options.

	XL		IG	
Cat® 3306 Turbocharged Diesel Engine at Net Power	130 kW	175 hp	138 kW	185 hp
Actual Operating Weight				
Differential Steering/CWT/Cab	22 072 kg	48,550 lb	23 244 kg	51,200 lb
Power, Angle, and Tilt Blade Capacity, up to:	3.83 m ³	5.0 yd ³	4.05 m ³	5.3 yd ³

D6R XL, IG Track-Type Tractor PAT Blade

The factory-installed Power, Angle, and Tilt (PAT) Blade offers the operator more versatility in medium dozing and grading applications.

Applications

The D6R XL and the D6R IG with a PAT Blade are a perfect match for finish and rough grading, medium duty dozing, windrowing, backfilling, V-ditching, and slope work.

For applications such as rock, stumping, pioneering, and heavy duty dozing, the SU Blade should be used.

Versatility

The D6R XL and D6R IG Track-Type Tractor equipped with a PAT Blade offer the versatility to angle the blade 25 degrees for angle dozing applications. The tilting function of the PAT Blade offers the versatility for V-ditching applications.

The PAT Blade is designed for medium dozing and less severe applications. The SU Blade is the choice for high production earthmoving and land clearing.

Arrangements

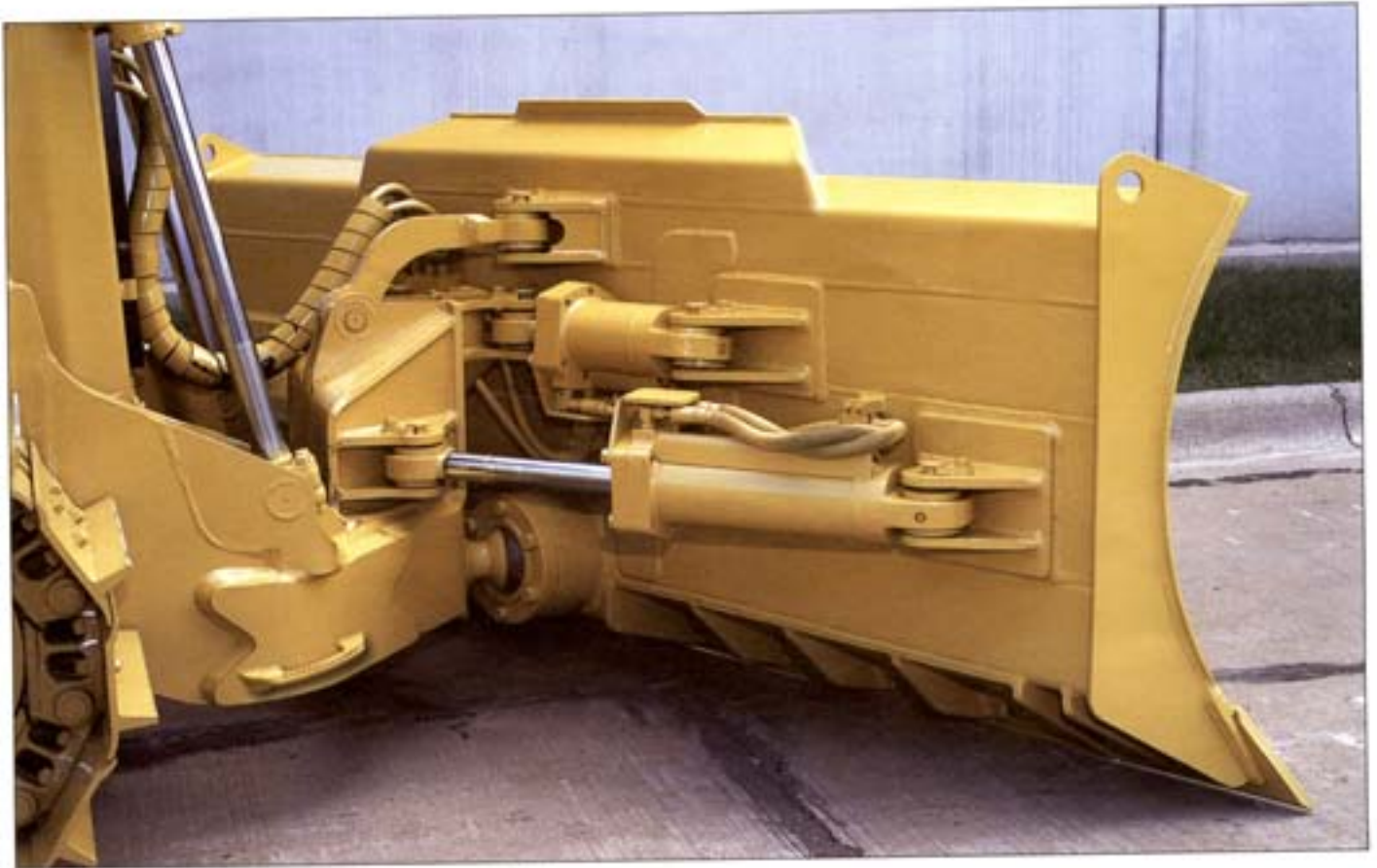
The D6R PAT Blade is available with differential steering and with either the Extra Length (XL), or Intermediate Gauge (IG) arrangements.

The XL arrangement delivers unmatched performance in general dozing applications. The XL tractor configuration extends the length of the tractor forward to provide a balanced platform for superior traction, blade control and stability for finish grading. The longer roller frame also improves flotation in soft underfoot conditions.

The IG arrangement helps to extend the working season of the tractor with more horsepower and wider track gauge. The IG Tractor Configuration uses a D6R XL as a base and widens the track gauge from 1880 mm (74 in) to 2030 mm (80 in). The wider gauge allows the use of wider track shoes which are ideal for very wet, but not swampy conditions. The IG arrangement also helps improve performance and versatility for finish grading.



Attachments



The Power, Angle and Tilt Blade arrangement for the D6R XL, IG is designed for optimal use with the following attachments or machine components.

Rear-mounted attachments are required to ensure optimum balance and performance.

- Ripper.
1566.3 kg 3450.0 lb
- Winch.
1194.0 kg 2630.0 lb
- Counterweights.
1253.0 kg 2760.0 lb

Track

To accommodate the C-Frame push arms, the following track shoes are required.

- XL.
 - 22" MS (41 sec) Offset
 - 22" MS (41 sec) Offset Trapezoidal
 - 22" MS (41 sec) Offset RBT
- IG.
 - 26" MS (41 sec)
 - 26" MS (41 sec) Trapezoidal
 - 28" MS (41 sec) Offset

D6R XL, IG Track-Type Tractor Power, Angle, and Tilt Blade Dimensions

(approximate)

Tractor Dimensions with blade	XL PAT		IG PAT		XL SU	
	mm	ft/in	mm	ft/in	mm	ft/in
A Track gauge	1880	74"	2032	80"	1880	74"
B Width of tractor						
Over trunnions	—	—	—	—	2640	8' 8"
Without trunnions (std. shoe)	2489	8' 2"	2692	8' 10"	2440	8' 0"
C Machine height from tip of grouser:						
Stack	3094	10' 2"	3094	10' 2"	3094	10' 2"
ROPS	3195	10' 6"	3195	10' 6"	3195	10' 6"
D Drawbar height						
from ground face of shoe	576	23"	576	23"	576	23"
E Length of track on ground	2821	9' 3"	2821	9' 3"	2821	9' 3"
F Length of basic tractor	3860	12' 8"	3860	12' 8"	3860	12' 8"
With following attachments, add to basic tractor length:						
Drawbar	217	8.5"	217	8.5"	217	8.5"
Ripper (with tip at ground line)	1403	55.2"	1403	55.2"	1403	55.2"
Winch	517	20.4"	517	20.4"	517	20.4"
G Blade dimensions						
Width	3619.5	142.5"	3794.2	149.4"	3260	128"
Height	1207.2	47.5"	1207.2	47.5"	1412	56"
Angle		25°		25°		—
Weight of blade and C-frame	3246 kg	7150 lb	3314kg	7300lb	2973 kg	6555 lb
(PAT blade only)	1343 kg	2960 lb	1385kg	3050 lb		
Lift above ground	1180.7	46.5"	1180.7	46.5"	1104	43.5"
Digging depth	732.4	28.8"	732.4	28.8"	459	18.1"
Full width angled	3288.1	129.4"	3439	135.4"	—	—
Blade capacity SAE LCY	3.83 m ³	5.0 yd ³	4.05 m ³	5.3 yd ³	5.61 m ³	7.3 yd ³
H Height of grouser	65	2.6"	65	2.6"	65	2.6"
I Ground clearance	383	14.8"	383	14.8"	383	14.8"
Track pitch	203	8.0"	203	8.0"	203	8.0"
Number of shoes per side		41		41		41
Number of rollers per side		7		7		7
Track shoe*	560	22"	660	26"	560	22"
Ground contact area	3.16 m ²	4888 in ²	3.73 m ²	5772 in ²	3.16 m ²	4888 in ²
Ground pressure (psi)*		9.94		8.86		8.65

*IG Track shoe 710 mm (28 in) offset has 8.23 ground pressure

AEHQ5337-01 (11-99)
(Replaces AEHQ5337)

www.CAT.com
© 1999 Caterpillar
Printed in U.S.A.

Materials and specifications are subject to change without notice.
Featured machines in photos may include additional equipment.
See your Caterpillar Dealer for available options.

CATERPILLAR®