



350D/6305 BULLDOZER

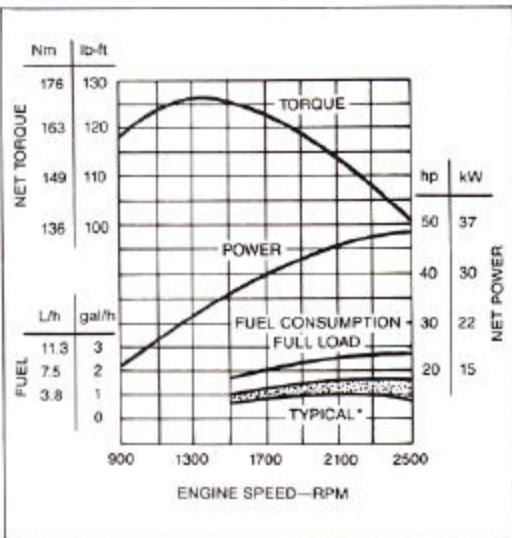
FEATURES

- 48 SAE net hp (36 kW)
- Single lever controls all dozer functions
- Hydraulic track adjustment
- Self-adjusting, oil-cooled steering clutches and brakes
- Walk-through compartment
- Hydraulic direction reverser
- Vandal protection
- Roll-over protective structure (ROPS)

ADD VERSATILITY WITH:

- Winch
- Fairlead and drawbar
- Integral log arch
- Ripper
- Backhoe
- Sideboom

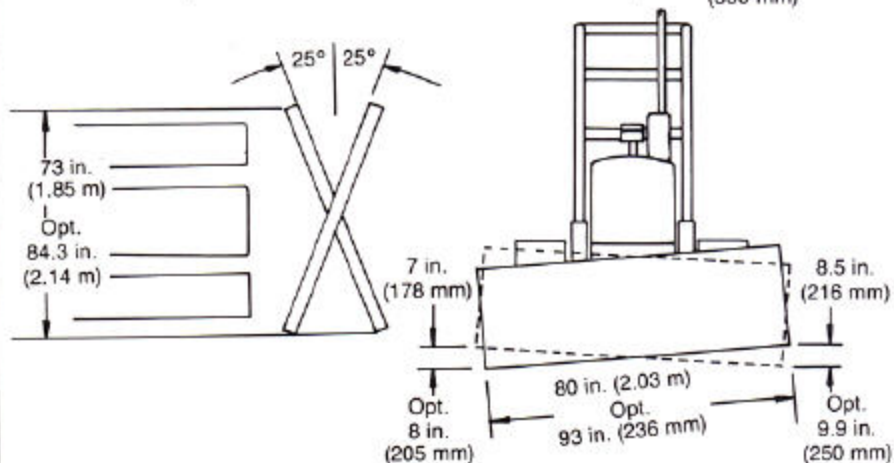
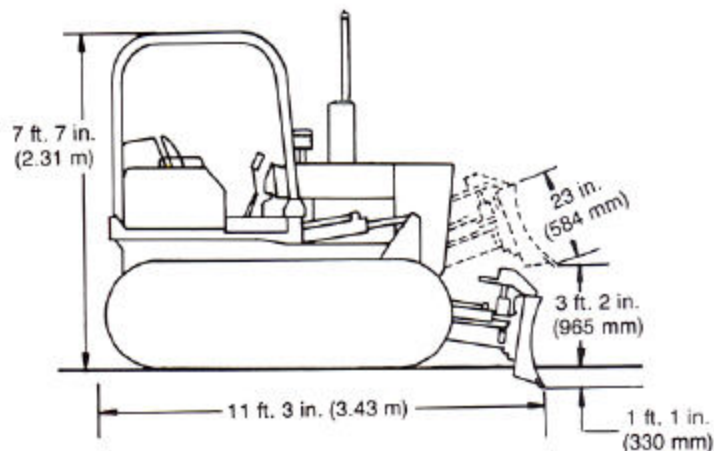
ENGINE PERFORMANCE



* Depending on operating variables



Model shown may include options



TED B. ARNETT, INC.
Hwy 93 S
P.O. Box 430
Gering, Nebr. 69341

350D/6305 BULL DOZER SPECIFICATIONS

Specifications and design are subject to change without notice. Wherever applicable, specifications are in accordance with SAE Standards. Except where otherwise noted, these specifications are based on a unit with diesel engine, roll-over protective structure, full fuel tank, 175-lb. (80 kg) operator and standard equipment.

Rated Power @ 2500 rpm:	SAE	DIN 6270
Net	48 hp (36 kW)	36 kW
Gross	50 hp (37 kW)	
Drawbar	34 hp (25 kW)	

Net engine power is with standard equipment including air cleaner, exhaust system, alternator, and cooling fan, at standard conditions per SAE J1349 and DIN 6270, using No.2-D fuel @ 35 API gravity. Gross power is without cooling fan.

Engine: John Deere 3-179D

Type	4-stroke cycle, naturally aspirated diesel
Bore and stroke	4.19 x 4.33 in. (106.5 x 110 mm)
No. of cylinders	3
Displacement	179 cu. in. (2.934 L)
Maximum net torque @ 1300 rpm	126 lb-ft (171 Nm) (17.4 kg-m)
Torque rise	25 percent
Cooling fan	Blower
Compression ratio	17.8 to 1
Main bearings	4
Lubrication	Pressure system w/full-flow filters
Dual-stage aspirated air cleaner	
w/restriction indicator	Dry
Electrical system	12-volt w/alternator
Battery (12 volt)	Reserve capacity: 180 minutes

Transmission Selective sliding gear

Hydraulic Direction Reverser Multiple-disk oil clutches

Gear	Travel Speeds		Maximum Drawbar Pull (with adequate weight and traction)		
	mph	km/h	lb.	kN	kg
Rev. or Fwd.					
1st	1.4	2.3	11,700	52.0	5310
2nd	1.9	3.1	8,300	36.9	3770
3rd	3.3	5.3	4,700	20.9	2130
4th	6.5	10.5	1,800	8.0	820

Steering:

Steering clutches and brakes are controlled by a single lever for each track. A pedal provides braking, and lockdown for parking.
Clutches Oil-cooled, hydraulically actuated multiple-disk; 9-in. (228 mm) disks; 16 friction surfaces per clutch.
Brakes Self-adjusting, self-energizing, oil-cooled contracting band with bonded lining.

Hydraulic System:

Control	Single "T-bar", triple hydraulic system
Pump	Gear, 15 or 23 gpm (0.9 or 1.45 L/s)
Pressure	2250 psi (15 514 kPa) (158.2 kg/cm ²)

Hydraulic Cylinders:	Bore	Stroke
Lift, two	3 in. (76 mm)	12.125 in. (308 mm)
Angle, two	3 in. (76 mm)	13.375 in. (340 mm)
Tilt, one	2.5 in. (64 mm)	7 in. (178 mm)
Cylinder rods	Ground, heat-treated, chrome-plated, polished	
Cylinder pivot pins	Hardened steel (replaceable bushings)	

Tracks (5-roller track frames w/rock guards):

Grouser	14 in. (356 mm)
Track shoes, each side	36
Ground contact area	1939 sq. in. (12 510 cm ²)
Ground pressure	5.5 psi (37.9 kPa) (0.387 kg/cm ²)
Length of track on ground	69.3 in. (1.76 m)
Track gauge, standard	48 in. (1.22 m)
Carrier roller	1
Adjustment	Hydraulic
Clearance at rear crossbar	13.25 in. (337 mm)

Blade: Reinforced, box-welded

Cutting edge	3-piece, reversible, replaceable
Center section	0.5 in. (12.7 mm)
End bits	0.625 in. (15.8 mm)

Capacities:

	U.S.	Liters
Cooling system	3.25 gal.	12.3
Fuel tank	22 gal.	83
Crankcase, including filter	9 qt.	8.5
Transmission—steering clutch housings and final drives	10 gal.	38
Direction reverser	12 qt.	11.3
Hydraulic reservoir	6.4 gal.	24.2
Hydraulic system	9 gal.	34

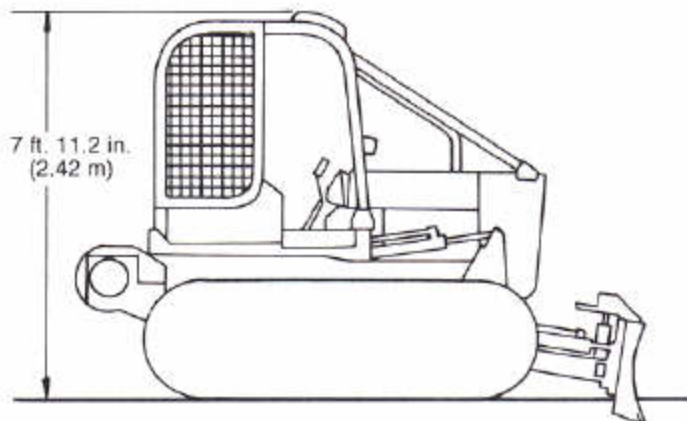
Additional Standard Equipment:

Adjustable seat w/armrests
Electric hourmeter
Engine sideshields
Front hitch
Front/rear bottom guard
Horn
Key switch w/pushbutton start
ROPS w/canopy and seat belt
Precleaner
Transistorized voltage regulator
Vandal protection

SAE Operating Weight w/ROPS 10,600 lb. (4810 kg)

Special Equipment:

Auxiliary control valve
Brush screens
Cab (includes ROPS)
Dozer counterweight
Ether starting aid
Final drive guards
Inner sprocket shields
Lights
Limb risers and overhead exhaust
Master electrical disconnect switch
PTO (540 rpm)
Remote cylinder and lines
Spark-arresting muffler
Swinging drawbar
Three-point hitch
Trash-resistant radiator
Two batteries
Winch drive
10-in. (254 mm) rubber shoes
14-in. (356 mm) open-center grouser shoes



Limb risers and brush-protection assembly for roll-over protective structure